



OAVT PUBLIC HEALTH RABIES RESPONSE PROGRAM (RRP)

RVTS HELPING IN THE COMMUNITY

Since January 2015 the OAVT RRP has been recruiting RVTs to provide this paid service to 34 Public Health Units across Ontario.

Becoming an OAVT RRP Team member allows RVTs to contribute to keeping their local communities safe while showcasing their unique skills as RVTs.

Interested?

Contact us:

Phone: 1-844-872-2437

Email: rrp@oavt.org

Or visit us online at:

www.oavtrrp.org

WHAT WE DO!

The OAVT Public Health Rabies Response Program (RRP) is a joint partnership between the OAVT and the Ministry of Health (MOH). The RRP provides the service of specimen collection and shipping for potential rabies exposures between animals and people.

HOW YOUR ANIMAL SHELTER CAN HELP:

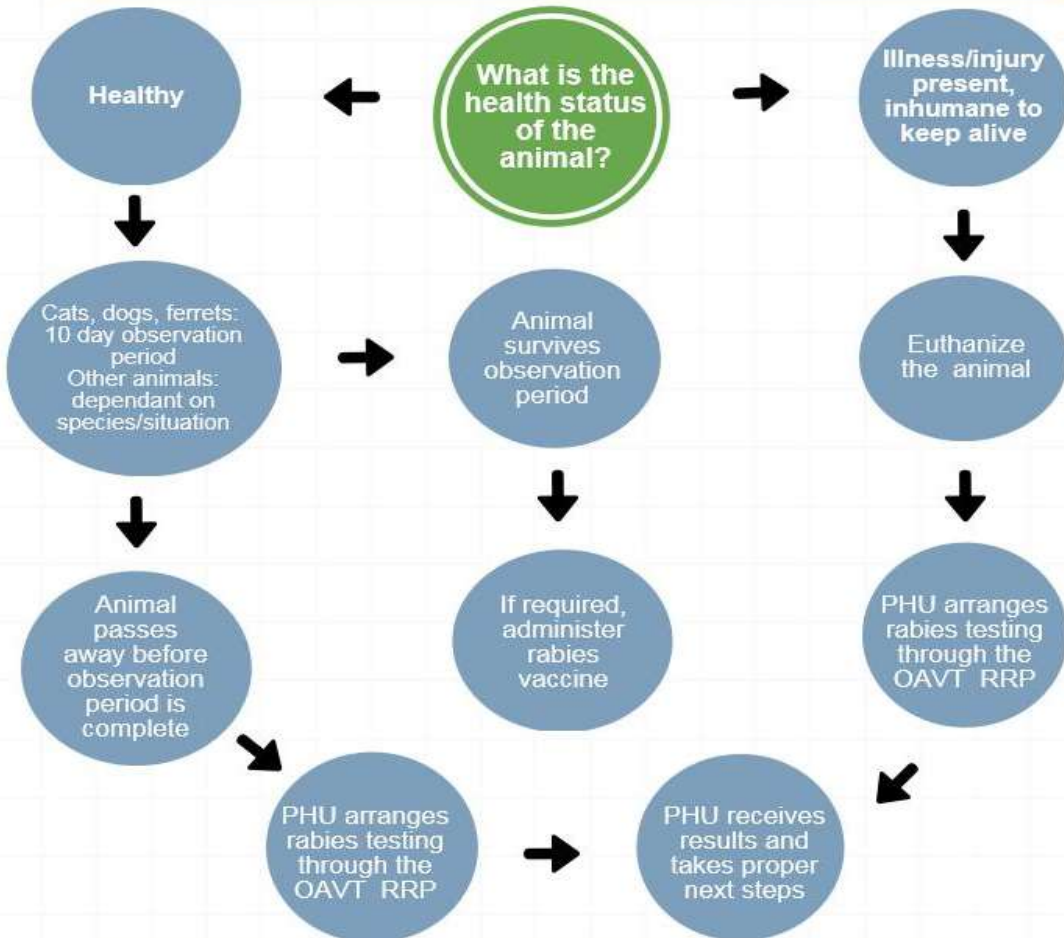
Our RVTs are collecting samples from farms, private residences, veterinary hospitals and shelters. The following are a few tips for you that will help improve the efficiency and accuracy of our program:

1. Once the animal has been confirmed deceased place it in the refrigerator. If the animal must be frozen ensure the neck is extended and the front legs are placed caudally against the chest.
2. The RRP will call to confirm the name of the RVT performing the collection and the date and time the RVT will be arriving. It is important that your entire Animal Shelter Team be familiar with the case.
3. Once the head has been removed the remaining body can be sent for cremation. Please label the bag as “suspect rabies patient” so the crematorium staff can ensure proper biosecurity measures are followed.



Do you know of a person who has been bitten/scratched by an animal?
YOU MUST CONTACT YOUR LOCAL PUBLIC HEALTH UNIT IMMEDIATELY!

What happens after you call Public Health?
 Public health will complete an investigation and then...



HEALTH PROTECTION AND PROMOTION ACT

A physician, registered nurse in the extended class, veterinarian, police officer or any other person who has information concerning any animal bite or other animal contact that may result in rabies in persons shall as soon as possible notify the medical officer of health and provide the medical officer of health with the information. R.R.O. 1990, Reg. 557, s. 2 (1); O. Reg. 420/07, s. 1.

This infographic is based on information provided in the MOHLTC's Guidance Document for the Management of Suspected Rabies Exposures and reflects situations pertaining to human exposure. Situations of exposures involving domestic animals, that do not involve human exposure, should be directed to the animal owner's veterinarian. Veterinarians seeking additional guidance in these cases can contact OMAFRA via the Agricultural Information Contact Centre at 877-424-1300.